

Combined woodworking machine NLX-310

The NLX-310 is a compact woodworking centre providing the modern woodworker ROBLAND precision, quality, liability and security.

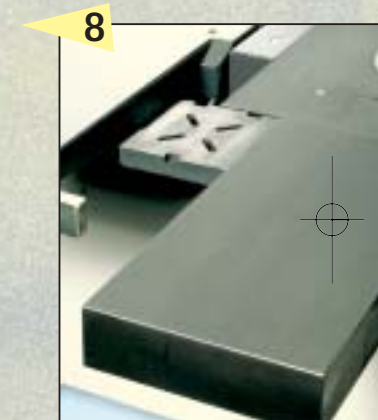
The frame is designed to maximise strength and rigidity and is built of 4 mm steel plate box-construction, it holds the aluminium sliding table and the cast iron tables such as saw and spindle and planer tables (weight of the machine 700 kg!).

The hard anodized aluminium extrusion of the sliding table is precision machined and features a 310 mm wide sliding table and impressive 140 mm wide lower beam. The heart of the sliding table is 8 hardened steel rods, inserted into the aluminium, set in a square pattern, to guide the steel bearing balls, held in a steel ball carrier.

This makes the whole system extremely wear-free, requiring almost no cleaning. Standard cutting length is 1900 mm, optional cutting length is 2500 mm. Standard motor (3) sizes are 3 kW three phase, 2,2 kW single phase, optional 3,7 kW three phase.

The machine is equipped in the standard execution with a scoring unit, driven by separate motor, and a 4- speed spindle arbor (speeds 2900/4000/6000/7500), this means that even a single phase machine has 4 speeds.

1. When machining large panels, the table surface is determining, with the NLX-310 you have a major advantage.
2. The mitre fence and stop on the sliding table is equipped with an excentric woodclamp. Exact angles can be set and secured.
3. Standard spindle diameter is 30 mm (optional 50 mm or 1 1/4"), the working length is 125 mm, the up-and down stroke is 140 mm. The max. tool diameter which can be lowered under the table surface is 180 mm, the spindle is, for changing tools purposes, locked with a lever. The upper spindle arbor protection and woodpushers assure optimal safety.
4. The large, hard anodized, jointer fence makes edge planing easy. Thanks to its special swivel-support bracket, the fence sets at any angle without a gap between the fence and the table surface.
5. Setting the height of the thicknessing table is easy and simple, the travel up/down is 230 mm.





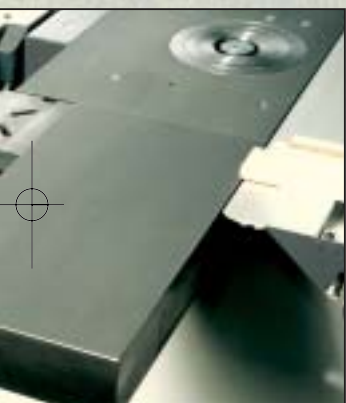
10



13



6. The morticer, easy and simple to detach, is operated by 2 detachable levers and is equipped with a 2-jaws chuck 0/16 mm.
7. Very easy to operate, well dimensioned 310 mm wide sliding table, 140 mm wide lower beam. The result of all this clever design is the very high quality of cut from the saw.
8. Standard on the NLX-310: cast iron power feed "fold away" support table. No need to take the power feed off each time the saw is used.
9. Standard on the NLX-310: the 4-speed spindle arbor with speeds 2900/4000/6000/7500 both three and single phase machines have now the 4-speed spindle. The chosen speed can, on both the inside and the outside of the machine be read.



11



14



10. The machine is equipped, in the standard version, with a separate motor driven scoring unit (scoring saw blade diameter 100 mm, bore 20 mm).
11. OPTION: "TERSA" cutter-block with 3 reversible knives, provides quick precise setting of the knives.
12. OPTION: "GILCO" universal spindle cutter-block, takes all grindable profile knives, no need for tilting spindle anymore! For spindle diameters 30 and 50 mm and 1 1/4 inch, cutter-block diameters 145 and 160 mm, height 40 and 50 mm.
13. and 14. OPTION: heavy duty tenoning table A4376 and safety hood A4375.
The optional heavy duty tenoning table and safety hood enables you to execute in all safety all tenoning work and makes your machine even more versatile.
The tenoning table is made of grey cast iron and is equipped with a anodized 1450 mm long sturdy fence with splitter protection and flip-over stop enabling repetition work, and a heavy duty woodclamp. The 2x45° tilt fence can be locked into any position along the tenoning table.
The tenoning safety hood is made for tools with a maximum diameter of 260 mm (tenon length 105 mm!).
Both options can be mounted onto all Robland and Knapp machines, old and new.

12

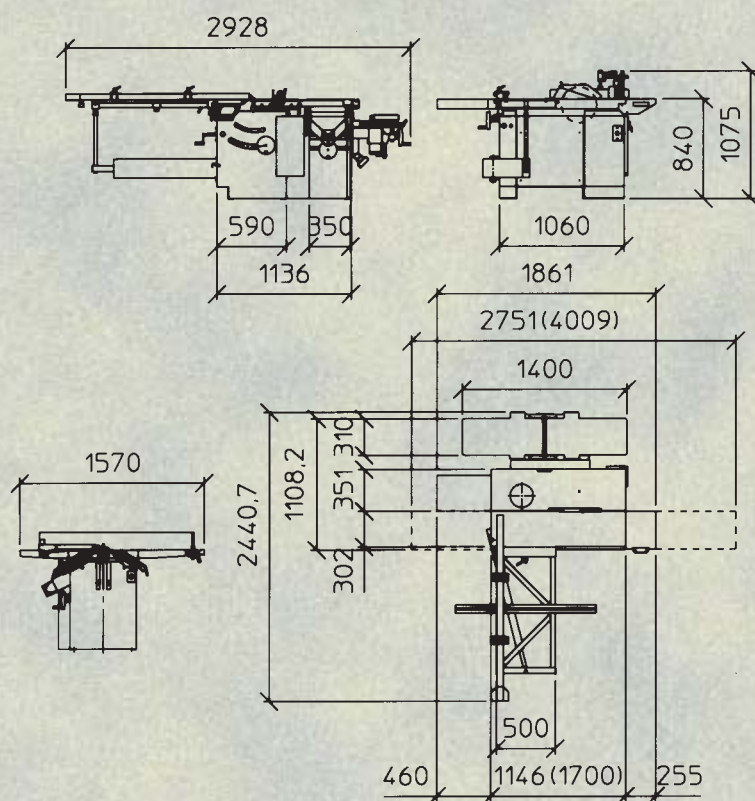


NLX-310

CE : 0070 050C 5486 0703



Dimensions



Robland International BV

GROOTE MARKT 20 • POSTBUS 22 • NL-4524 CD SLUIS • NEDERLAND

☎ +31 (0) 117 - 462880 • TELEFAX +31 (0) 117 - 462888

www.roblandmachines.com

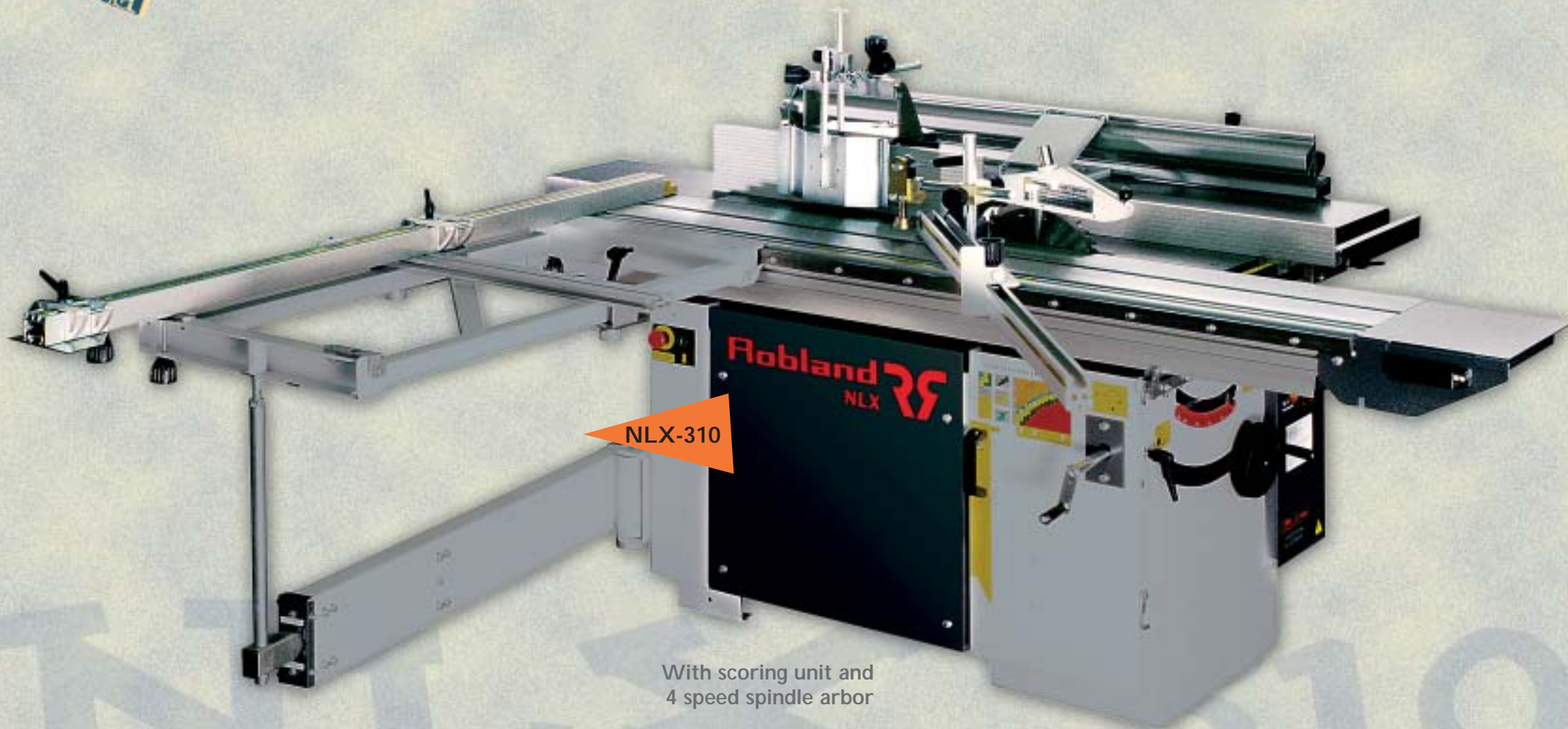
Technical Data NLX-310

Voltage	V	230-400-230 1 phase
Weight	Kg	680 (NLX-310/1700)
	Kg	700 (NLX-310/2500)
Dimensions machine crate (LxWxH)	mm	2300 x 1300 x 1000
(sliding table stays mounted onto the machine during transport)		
Planer- Thicknesser		
Diameter cutterblock	mm	70
Knives		3
Dimensions knife	mm	310 x 25 x 3
R.P.M.		5200
Cutterbloc length	mm	310
Max. depth of cut	mm	4
Dimensions planer tables	mm	310 x 1400
Dimensions thicknesser table	mm	310 x 430
Thicknesser capacity	mm	230
Feeding speed	m/min	6
Motor three phase	hp	4 (option 5)
Motor single phase	hp	3
Circular saw		
Saw blade diameter max.	mm	300 maximum
Max. cutting depth at 90°	mm	100
Max. cutting depth at 45°	mm	70
Saw spindle diameter	mm	30
R.P.M.		4500
Scoring saw		
Saw blade diameter max.	mm	120
Bore	mm	20
R.P.M.		7000
Saw table dimensions	mm	1150 x 350
Length sliding table standard NLX-310	mm	1900
Length sliding table optional NLX-310	mm	2500
Motor three phase	hp	4 (option 5)
Motor single phase	hp	3
Motor three phase scoring unit	hp	0,75
Motor single phase scoring unit	hp	0,75
Spindle		
Diameter spindle	mm	30 (option 50 or 1 1/4 ")
Max. stroke	mm	140
Capacity spindle	mm	125
Capacity fence	mm	180
Capacity optional tenoning hood	mm	250
R.P.M. three and single phase		2900/4000/6000/7500
Motor three phase	hp	4 (option 5)
Motor single phase	hp	3
Mortiser		
R.P.M.		5200
Stroke: left-right/in-out/up-down	mm	165 x 140 x 85
Dimensions mortiser table	mm	200 x 425
Capacity chuck	mm	0-16
Mounting of the chuck		M24 x 1,5 LEFT
Machine dust suction ports diameter	mm	100
Dust suction port diameter saw blade safety hood	mm	60

The specific security prescriptions for each country are included in the sales prices • Modifications possible without previous advise.

FOR LOVE OF WOOD

RS Robland
machines belgium



NLX-310

With scoring unit and
4 speed spindle arbor